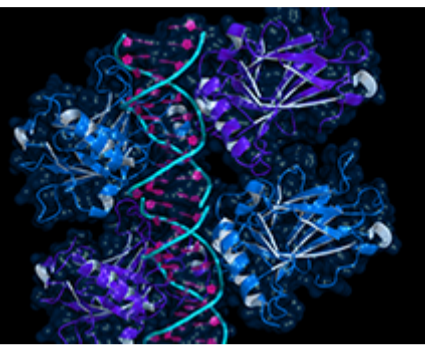




Trending Newsletter in March

Company Introduction



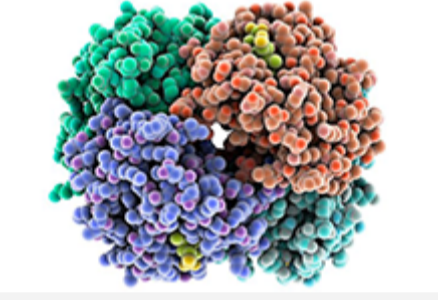
Creative Proteomics is a professional CRO company that specializes in a full range of services to support various proteome-related researches from identification of single proteins to large-scale proteomic studies. With the most advanced technology platforms and experienced staffs, we can provide not only proteomics services but also metabolomics services, bioinformatics services, etc.

March Theme: Mass Spectrometer

The mass spectrometer, is a powerful analytical instrument that can sort the produced ions according to their mass-to-charge (m/z) ratios, and provide output signals (peaks), indicating the m/z ratios and intensities (abundances) of all the detected ions. Mass Spectrometry is commonly used in analytical laboratories that focus on physical, chemical, or biological properties of a great variety of compounds in various samples, collected from different sources, by utilizing the combination of different ion sources and mass analyzers, even tandem or hybrid mass spectrometry.

Most Popular Services

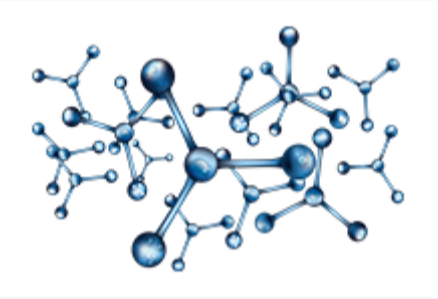
Based on our advanced mass spectrometry platforms, Creative Proteomics can provide various services, including:



Proteomics Service

With years of experience, we can provide a variety of proteomics services to assist in your basic research and drug discovery and development, including protein identification services, protein quantification service.....

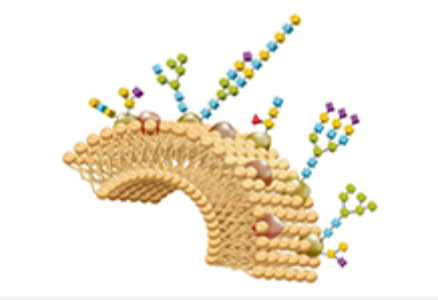
[Learn More](#)



Metabolomics Service

Metabolomics is the study of metabolism, specifically the science of identifying and quantifying the biochemical byproducts of metabolism. We can provide targeted & untargeted metabolomic profiling, lipidomic profiling.....

[Learn More](#)



Glycomics Service

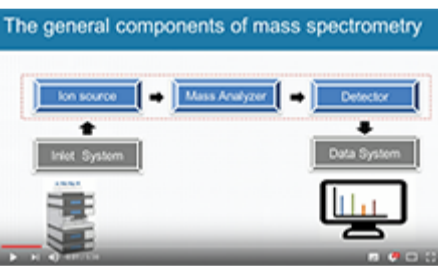
Glycomics is the systematic study focusing on the structure and function of the complete set of glycans and glycoconjugates and identifying the genes that encode glycoproteins. Comprehensive glycomics services.....

[Learn More](#)

Information about Upcoming Events

Name	Date	Country	City
12 th WRIB (Workshop on Recent Issues in Bioanalysis)	2018/4/9-2018/4/13	the United States	Los Angeles
11 th Annual Proteins & Antibodies Congress	2018/4/16-2018/4/17	the United Kingdom	London
Experimental Biology 2018	2018/4/21-2018/4/25	the United States	California
15 th Annual Pharmaceutical Compliance Congress (PCC 2018)	2018/4/23-2018/4/25	the United States	Washington, DC

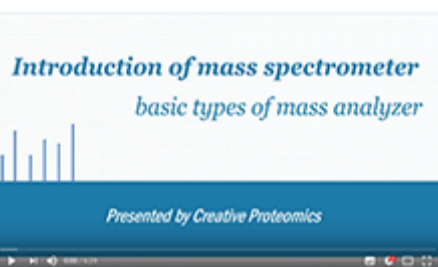
Video



Introduction of a Mass Spectrometer — Ion Source

An ion source is a device where samples are ionized. There are several types of ion source that are usually used in a mass spectrometry, including electrospray ionization, matrix-assisted laser desorption/ionization (MALDI).....

[Learn More](#)



Introduction of a Mass Spectrometer — Mass Analyzer

The mass analyzer is the heart of the mass spectrometer, which can separate ions based on mass to charge ratios. There are several types of mass analyzers, including time of flight (TOF), quadrupole, ion trap.....

[Learn More](#)

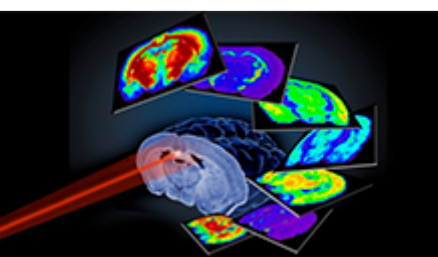
Blog



The Market for Clinical Mass Spectrometry Will Grow at 7.6 % Annually over the Next Five Years

In preparation for the upcoming market changes, many leading mass spectrometer manufacturers have begun to seek regulatory approval.....

[Learn More](#)



New Mass Spectrometry Technology Promotes Cancer Tissue Analysis into Digital Age

Mass spectrometry imaging technique is undoubtedly a new way of completely automated histological analysis.....

[Learn More](#)

Contact Us

www.creative-proteomics.com