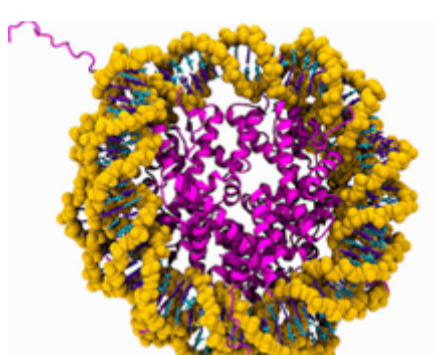


**July Theme:
Protein Gel and Imaging Analysis**

Company Introduction



Creative Proteomics is a professional CRO company that specializes in a full range of services to support various proteome-related researches from identification of single proteins to large-scale proteomic studies. With the most advanced technology platforms and experienced staffs, we can provide not only proteomics services but also metabolomics services, bioinformatics services, *etc.*

July Theme: Protein Gel and Imaging Analysis

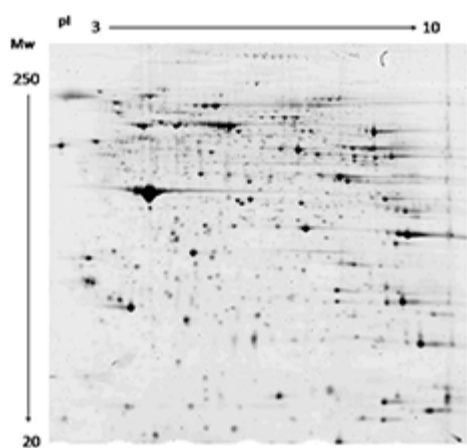
Protein gel electrophoresis is a simple and rapid method for separating proteins before downstream detection or analysis. And it can be used for protein isolation, identification, and characterization. Combined with some easy technologies, like staining or western blot, protein gel and imaging can quickly provide information about the proteins.

Popular Services

Protein Gel and Imaging Analysis

At Creative Proteomics, we can provide services about protein gel and imaging for various applications in a quick and reliable manner. In addition, you can order our protein gel and imaging analysis in combination with our other services, such as protein identification or protein quantification. We can provide various protein gel and imaging services, including:

- 2D Electrophoresis
- Western Blot & Electrical Transfer
- 2D Blue Native / SDS-PAGE for Complex Analysis
- Imaging Analysis



Information about Upcoming Events

Name	Date	Country	City
Protein Phosphatases	2018/7/15-2018/7/20	U.S.	Colorado
Protein Folding in the Cell	2018/7/22-2018/7/27	U.S.	New York
Proteins and Peptides 2018 conference	2018/7/23-2018/7/26	Switzerland	Geneva
Experimental Techniques for Studying Proteins and Lipids in Biological Membranes	2018/7/31-2018/8/1	U.K.	Birmingham

Video



Two Dimensional Gel Electrophoresis

Two-dimensional gel electrophoresis (2-DE) is considered a powerful tool for proteomics work. 2-DE separates proteins depending on two different steps...

[Learn More](#)



Brief Introduction of Western Blot

Western blot is a commonly used method for protein analysis, which can be used for qualitative and semi-quantitative protein analysis. It uses gel electrophoresis to separate native proteins by...

[Learn More](#)

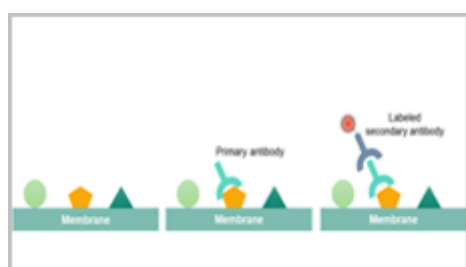
Blog



Agilent Wins the Best Mass Spectrometry Product and Best New Product Award in 2018

Recently, Agilent Technologies Inc. announced two awards for the 2018 Scientists' Choice Awards, in which the Agilent 1260 Infinity II Prime LC System was selected...

[Learn More](#)



The Principle and Procedure of Western Blot

SDS-PAGE allows protein samples to be separated and transferred to a solid support which can absorb the protein and keep its biological activity unchanged...

[Learn More](#)

Contact Us

www.creative-proteomics.com

